

# Annexing Into the City of Safety Harbor

## What Does Annexation Mean?

Annexation is the process that allows properties outside of the city limits to become part of the city. Annexation is voluntary.

## What Are Some Benefits of Annexation?

- Vote in municipal elections
- Connect to city utilities
- Receive solid waste and code enforcement services
- Reduced rates for recreation facility rentals, programs, and activities
- It's free to apply!

## What are the steps to annex?

To apply, fill out the annexation application below. After submittal, steps include staff review and two City Commission public hearings. After annexation, zoning is assigned to the property. Properties are assigned a zoning district that is equal to or less intensive than the current designation in Pinellas County. Zoning

assignment steps include a Planning & Zoning Board meeting and two City Commission public hearings. Annexation and zoning assignment take approximately four months to complete.

[cityofsafetyharbor.com/525/Annexation](http://cityofsafetyharbor.com/525/Annexation)

Applications may be dropped off or mailed to:

Planning Division, City of Safety Harbor  
750 Main Street  
Safety Harbor, FL 34695

There is no charge to annex a property, unless the property owner would like to apply for a more intensive zoning district than the current designation in Pinellas County. This requires submittal of a rezoning application and application fee. Depending on the zoning district that is proposed, City and County-wide Future Land Use map amendments may be required in advance of the rezoning.



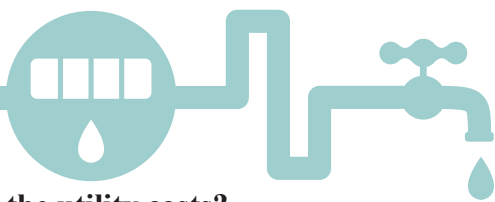
**City of Safety Harbor**

750 Main Street • Safety Harbor, FL 34695  
727-724-1555 • [CityofSafetyHarbor.com](http://CityofSafetyHarbor.com)

**Annexing**  
*into the*  
**City of**  
**Safety Harbor**



# Annexation FAQs



## Can applications be submitted electronically?

Yes - however, several attachments are required, including a sealed survey that would need to be dropped off or mailed to the Planning Division. Applications may be e-mailed to: [PlanningDepartment@cityofsafetyharbor.com](mailto:PlanningDepartment@cityofsafetyharbor.com)

## How will my property taxes change?

The Pinellas County Property Appraiser has a Tax Estimator: [https://www.pcpao.gov/tax\\_estimator](https://www.pcpao.gov/tax_estimator)

The total millage rate for property in Safety Harbor and in Unincorporated Pinellas County is 17.0688 and the total millage rate for property in Safety Harbor is 17.0131, based on fiscal year 2024 millage rates. Millage rates can change and are adopted by each local government.



## What are the utility costs?

The City of Safety Harbor bills residents on a monthly basis for water and sewer and these rates are subject to annual increases:

RESIDENTIAL RATES FOR WATER EFFECTIVE DATE 10/1/20	
Customer Charge	Rate: \$3.04
Base facility charge per Equivalent Residential Unit	Rate: \$19.77

WATER RESIDENTIAL USAGE CHARGES EFFECTIVE DATE 10/1/20	
Water Used (thousand gallons)	Rate
0.0—5.0	\$3.65
5.0—10.0	\$9.12

*Note: Additional fees are billed for consumption beyond 10,000 gallons. The average water consumption in Safety Harbor in 2022 was 65 gallons per day per person.*

RESIDENTIAL RATES FOR SEWER EFFECTIVE DATE 10/1/23	
Customer Charge	Rate: \$3.04
Base facility charge per Equivalent Residential Unit	Rate: \$21.23

SEWER RESIDENTIAL USAGE CHARGES EFFECTIVE DATE 10/1/23	
Usage charge per thousand gallons of metered water use	Rate: \$7.49

City water rates for properties within Unincorporated Pinellas County are charged a 25% surcharge for water. Properties north of S.R. 580 within city limits receive water services from Pinellas County Utilities.

In addition to the above charges, the following services are billed monthly as a flat fee per household:

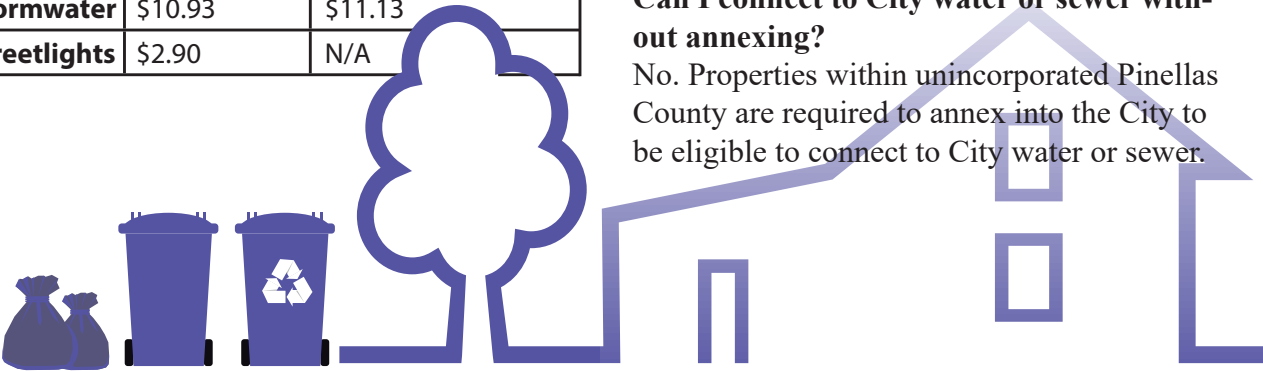
Sanitation: \$33.58  
Stormwater: \$10.93  
Streetlights: \$2.90

For more information about utility fees, please visit the Utility Accounts website at:

[cityofsafetyharbor.com/20/Utility-Billing](http://cityofsafetyharbor.com/20/Utility-Billing)

An example comparison of utility costs, based on average consumption rates is below:

Example of Single Family Residential Monthly Utility Cost Comparison		
	Safety Harbor	Unincorporated Pinellas County
Water	\$26.46	\$32.72
Sewer	\$70.40	\$71.81
Sanitation	\$33.58	No city services provided – must use private contractor
Recycling	\$0.00	
Stormwater	\$10.93	\$11.13
Streetlights	\$2.90	N/A



Forward Pinellas has a Truth In Annexation Worksheet that compares the cost of annexing:- [forwardpinellas.org/building-your-future/truth-in-annexation](http://forwardpinellas.org/building-your-future/truth-in-annexation)

## How Will My Services Change?

**Water:** If your property is connected to City water, the 25% additional charge will be removed.

**Sewer Services:** The City code requires that existing structures within 150 feet of a gravity sewer line connect within 180 days after notification that services are available.

**Solid Waste and Recycling:** The City of Safety Harbor provides residential curbside collection. The City has the exclusive right to provide sanitation services within the city’s municipal limits. For more information, visit the Sanitation Division’s website at:

[cityofsafetyharbor.com/108/Sanitation-Division](http://cityofsafetyharbor.com/108/Sanitation-Division) or call Public Works at (727) 724-1550.

If you have additional questions, contact the Community Development Department at (727) 724-1555 x 1702 or visit the following website:

[cityofsafetyharbor.com/525/Annexation](http://cityofsafetyharbor.com/525/Annexation)

## Can I connect to City water or sewer without annexing?

No. Properties within unincorporated Pinellas County are required to annex into the City to be eligible to connect to City water or sewer.