



# MOVING SAFETY HARBOR

# FORWARD



## Community Workshop

### Sidewalk and Bicycle Facilities Master Plan

*October 25<sup>th</sup>, 2021*

# Welcome! Thank you for attending!

## Presentation Outline

- Introductions
- Study Overview
- Existing Conditions
- Workshop Activities
- Next Steps





# Study Overview

---



# Study Purpose and Objectives

## Develop a Sidewalk and Bicycle Facilities Master Plan

- **IDENTIFY** key projects for the Master Plan
  - Connect the community to downtown, schools, parks, and commercial areas
  - Sidewalk and bicycle facilities improvements
- **PRIORITIZE** projects for funding
  - Mobility Fee funds







# Project Schedule

- Public Outreach (October - December 2021)
- City Commission Workshop (November/December 2021)
- Draft Master Plan (January/February 2022)
- City Commission Presentation (March 2022)
- Final Recommendations (February – April 2022)



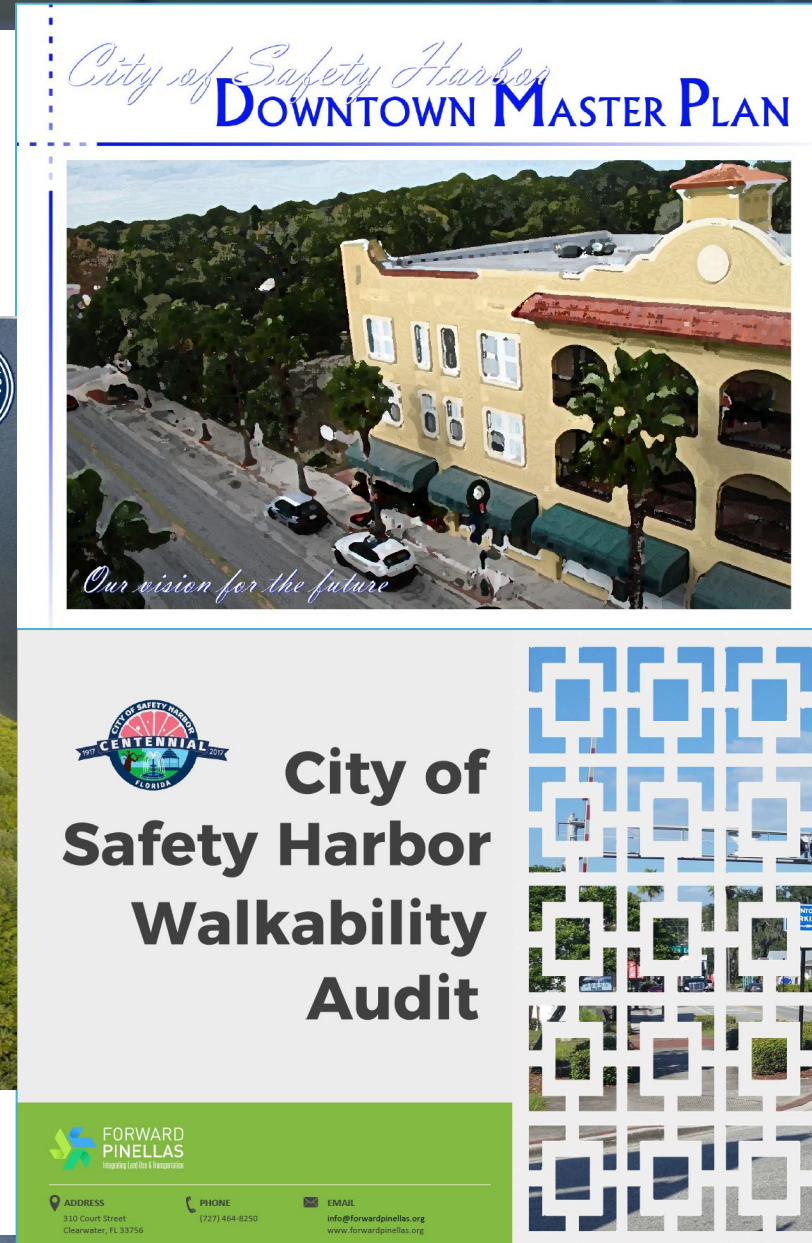
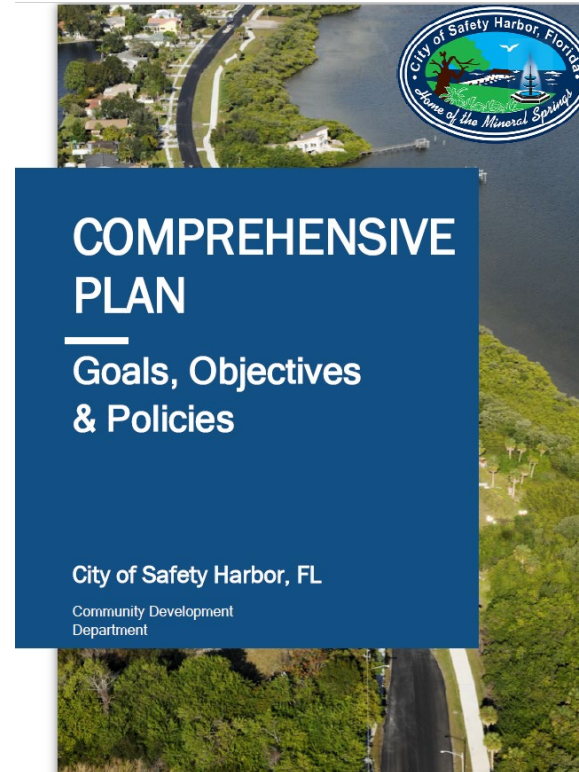
# Existing Conditions

---



# Related Plans and Studies Review

- Comprehensive Plan
  - Transportation Element
- Downtown Master Plan
- Walkability Audit





# Existing Conditions – Sidewalks

## Extensive sidewalk network in the City

- Downtown is well connected by sidewalks
- Residential neighborhoods have good sidewalk facilities

## Opportunities

- Sidewalk gaps
- ADA improvements





# Existing Conditions – Bicycle Facilities and Trails

## Bicycle Facilities

- Low speed roads
- Marked bike lanes
- Paved shoulders
- Sidewalks

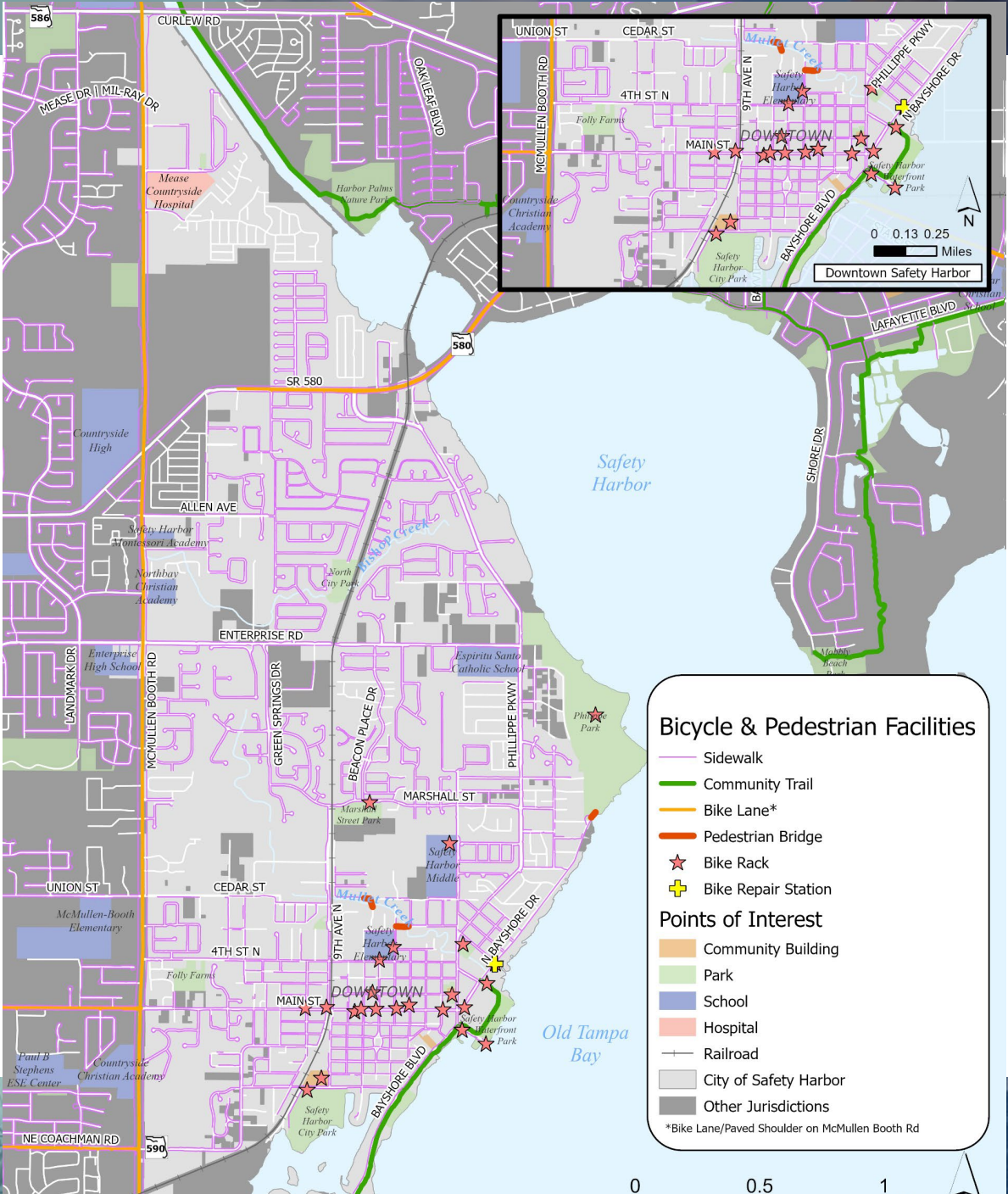
## Trails

- Provide regional connections to and from Downtown and into the City





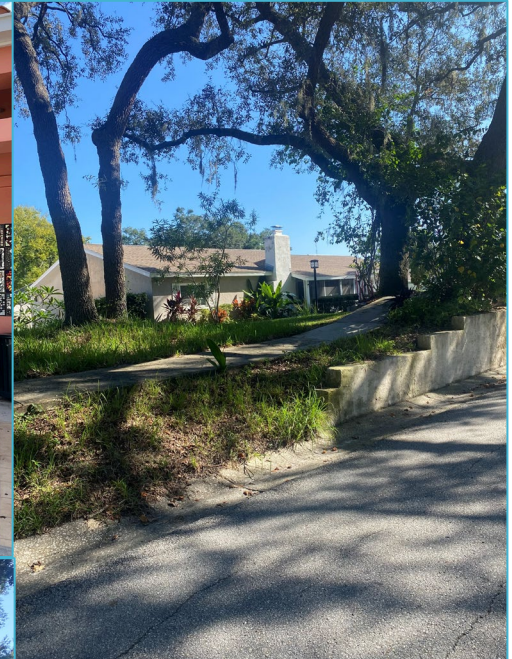
# Connectivity





# Opportunities

- Gaps in sidewalk connections
- Greenways and neighborhood connections
  - Traffic calming elements
- Wayfinding and signage
- Placemaking elements
  - Artistic bike parking
- ADA improvements





# Corridor Selection Methodology

## Safety

- Present/perceived safety issues
- Crashes, including pedestrian and bicycle crashes
- Lack of street lighting



## Connectivity

- Connectivity to City destinations
- Connectivity to existing and/or planned trails



## Community Support

- Support from public and stakeholders
- Support from City staff/partner agencies
- Identified in other plans



## Complexity & Cost

- Drainage impacts
- Utility relocations
- Right of Way (ROW) acquisitions
- Driveway/Access modifications
- Opinion of Probable Cost





# Next Steps

## Project Next Steps

- Collect and analyze survey results
- Finalize prioritization methodology
- Develop Master Plan recommendations

## Upcoming Community Outreach

- Survey open through November 30<sup>th</sup>
- Come see us at Third Friday in November!





# Workshop Activities

---



# Activities Overview

- Open discussion
- Table based breakout session
  - Review existing conditions
  - Live/Work
  - Project Priority
  - Mapping Activities
    - How do you travel around Safety Harbor?
    - What are issues and challenges?
    - What are your top priority locations?
  - Survey Table
- Wrap-up discussion







## Question #1

**Tell us how you travel in and around Safety Harbor? What are locations that you wish would be easier or more comfortable to access?**





## Question #2

**What are your sidewalk and  
bicycle facility related concerns  
in Safety Harbor?**



# Next Steps

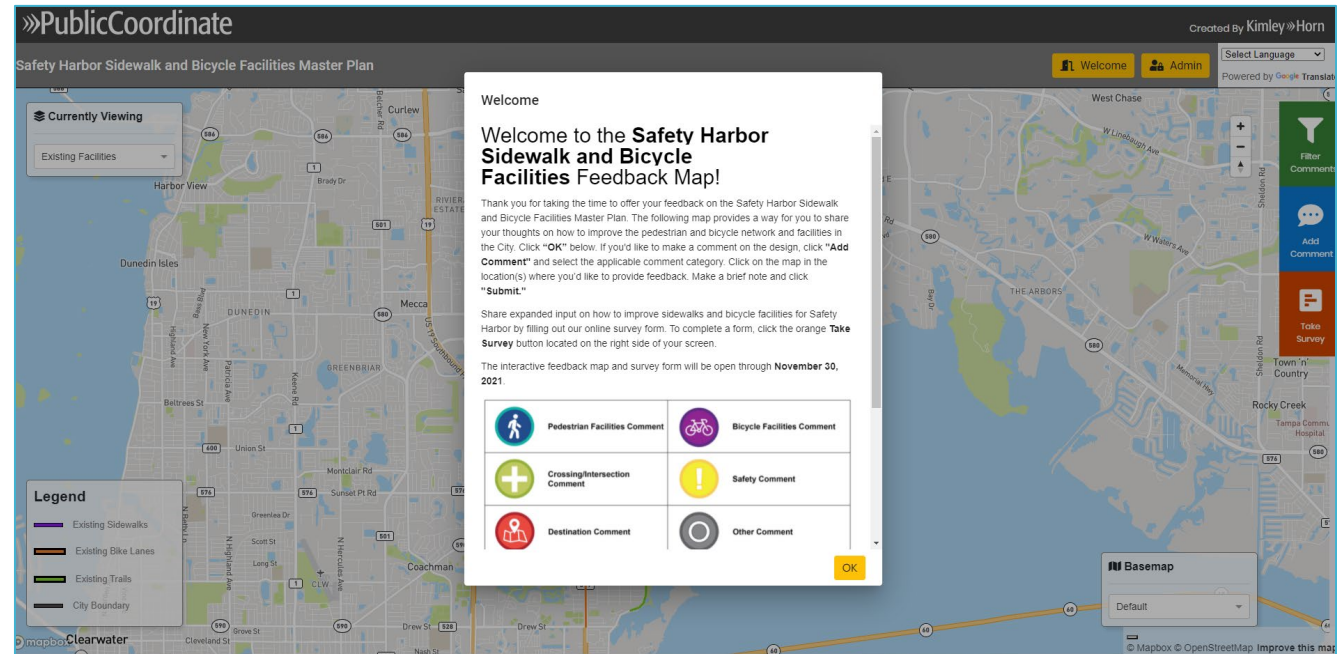
---



# Survey – Now Open for Responses!

Provide your feedback on:

- Sidewalk and Bicycle Facilities Existing Conditions
- Areas of Concern Related to Sidewalk and Bicycle Facilities
- Project Prioritization Methodology





# Project Information

## Project Website

<https://www.cityofsafetyharbor.com/827/Sidewalk-and-Bicycle-Facilities-Master-P>

## Project Contact

Marcie Stenmark

[mstenmark@cityofsafetyharbor.com](mailto:mstenmark@cityofsafetyharbor.com)



# Thank you for your time!







MOVING SAFETY HARBOR

FORWARD



Kimley»Horn